

Lauderdale Lakes Lake Management District

2016 Annual Meeting

AGENDA

- Approval of Agenda
- Approval of 2015 Minutes
- Commissioner Election
- Water Safety Patrol Report
- Golf Course Report
- Long Range Planning Update
- Environmental Projects Report
- Septic Pumping Report
- Aquatic Plant Management (“weed harvesting”) Report
- Outflow Dam Report
- Treasurer’s Report
- Amendments
- Approval of 2017 Budget & Tax Levy
- Other Business for Discussion

Lake District Board

- Elected Commissioners
 - Scott Mason – Chairman
 - Debbie Ferrari – Treasurer
 - Jack Sorenson – Secretary
 - Peter Van Kampen
 - Greg Wisniewski
- Appointed Commissioners
 - Rick Callaway – Walworth County
 - Don Sukala – Town of LaGrange

Check out the Web Site: lauderdalelakedistrict.com

Lauderdale Lakes Lake Management District

262-642-1690

Home Community Events Projects Accomplishments Lake District Commissioners Meetings News Documents Links Contact Us

Lauderdale Lakes Lake Management District

The Lauderdale Lakes Lake Management District (LLMD) was created in 1991 under Chapter 33 of the Wisconsin Statutes for the primary purpose of protecting and rehabilitating Lauderdale Lakes. The LLMD is governed by a board of commissioners who are elected by district electors to a three-year term of office.

The LLMD has town sanitary district powers under Wisconsin Statute Sections 60.77 and 60.78. Under these Wisconsin Statutes, the LLMD has the authority to act as necessary to carry out a program of lake protection and rehabilitation.

The District's Annual meeting is held the Saturday of Labor Day weekend. Business conducted at the annual meeting includes approving the budget and tax levy for the following year, electing commissioners, and any other business. Notices of regular and special LLMD meetings are published at the Lauderdale Lakes Country Club and on this web site. Meetings requiring a legal notice are also published in the Elkhorn Independent newspaper. All meetings are open to the public. Approved minutes for each meeting are published in the "Meetings" section of this web site.

District funds are collected through a special line item on annual property tax bills. Funds are used to support aquatic plant management, maintenance of the outflow dam, the water safety patrol, environmental projects, the development of ordinances to protect the lake and property owners, water quality, local intergovernmental cooperation, and other items as allowed by law.

The LLMD has been awarded a number of Wisconsin DNR Grants to fund environmental initiatives and aquatic plant management. The projects funded by these grants help to ensure water quality and lake property values for both current

CONTACT US

SUBSCRIBE

Long-Range Planning

We would like to invite public comment on our long-term plans. Please click the link below to learn more about our plans, view our survey results and to be a part of the process by sharing your ideas and feedback.

[Read More »](#)

Lauderdale Lakes L...html

Show all downloads...

7:36 AM 9/1/2016



Approve 2015 Minutes

Election of Commissioner

- One vacancy to be filled
- Two candidates properly submitted nomination papers
 - Scott Mason
 - Richard Mikulecky

Water Safety Patrol Report



Our Mission

- To protect and enhance the quality of life of those we serve by striving to provide a consistently high level of law enforcement services focused on education, services and enforcement
- We are committed to building a lasting community partnership with all we serve.

Key Success Factors

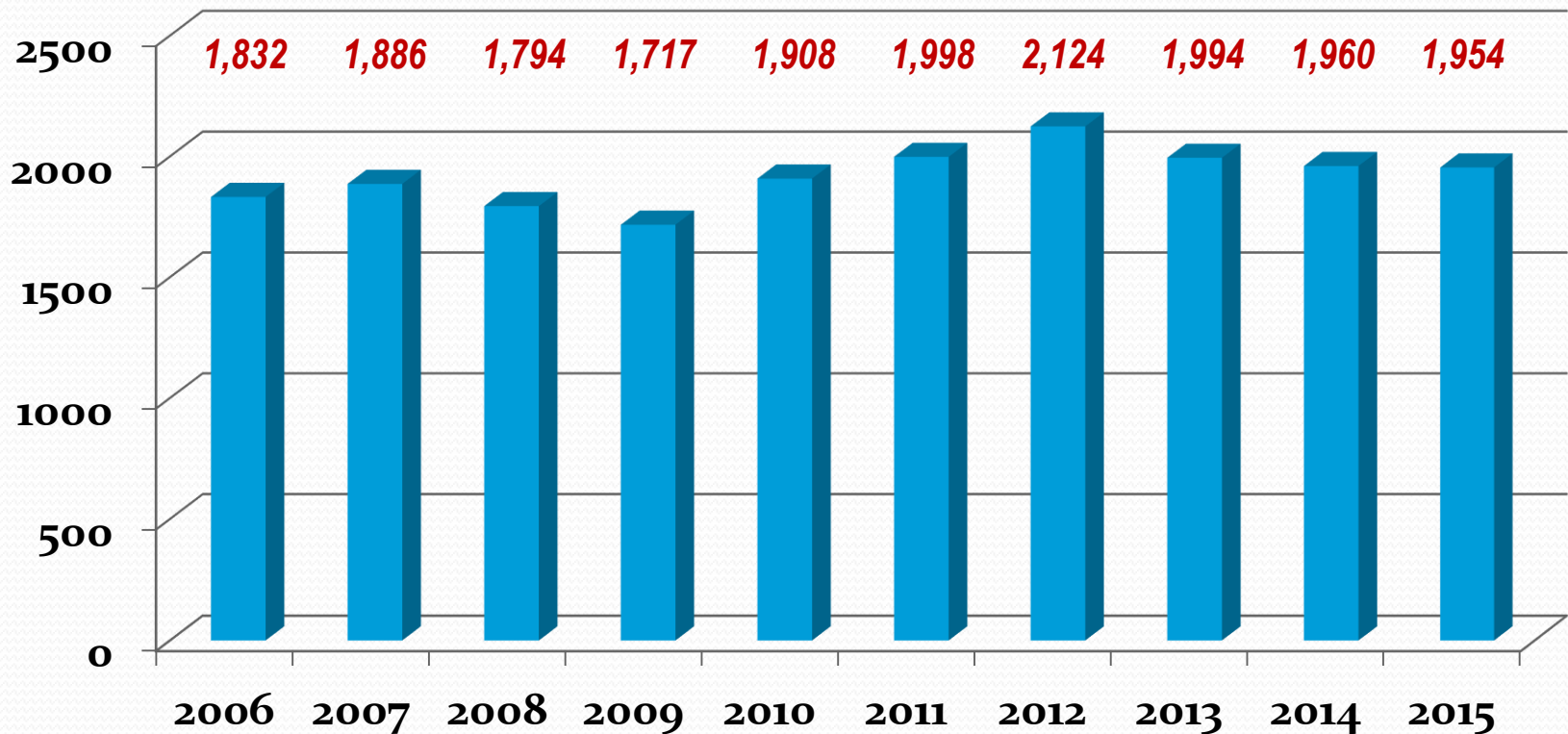
- Service to the Community
- Education & Outreach
- Qualified & Professional Law Enforcement Team

Service to the Community

- Patrol Lakes & Launches
- Provide Assistance if needed
 - People Assisted = 95
 - Vessels Assisted = 36
- Deal with Water Hazards
- Support Sheriff with Search & Rescue Operations

History of Patrol Hours

Total Hours Patrolled



Education & Outreach

- DNR Approved Boating Course
 - Required if born 1/1/89 and after
- PWC orientation
 - Does NOT replace required Boating Safety Course
- Updates on State Laws and Local Boating Ordinance
- LLIA Community Activities

Qualified & Professional Law Enforcement Team

- Experienced Leadership and Officer Team
 - Chief Ken Blanke – 39 years on Lauderdale
 - Sergeant Janene Littmann – 29 years on Lauderdale
 - 11 returning Officers – up to 15 years (avg 6.5 yrs)
 - 2 new Officers
- ALL are Certified Law Enforcement Officers
- Strive to maintain professional behavior in every interaction
- Follow up on all inquiries

Citations: The Reality (2015)

Total Hours Patrolled:	1,954 hours
Number of Contacts:	475
Number of Warnings:	230
Number of Citations:	104 (included 6 OWI arrests)
Resolution of Citations:	
Dismissed:	43
Fine Imposed:	61
Total Citation Revenue:	\$2,109.61 (\$20.28/citation)

Nearly all of the revenue from fines or forfeitures is retained by the County to cover court costs.

New (and not so new) Laws

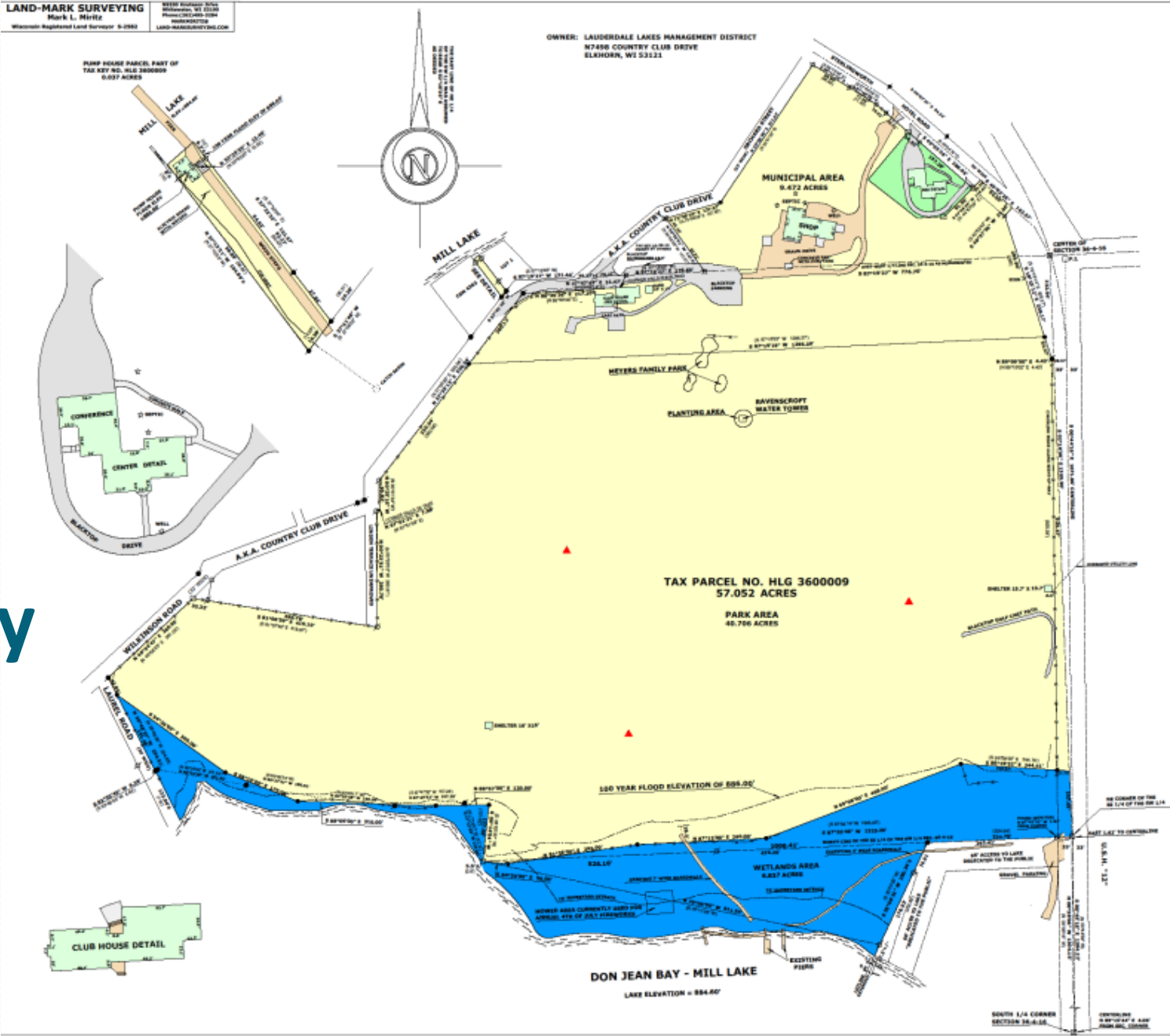
- State Laws
 - Operate at Slow No Wake speed within 100 feet of patrol or emergency vessel displaying lights or sirens
 - No blue colored lights which may be confused with patrol or emergency vessel
 - Reminder....stand up paddleboards must have PFD
- Local Boating Ordinance
 - “No Anchor Zone” in Pebble Beach sand bar area
 - NO towing in channels between Green & Middle Lakes OR Mill Lake & Sterlingworth Bay
 - Reminderyou “Need 3 to Ski”

Golf Course Report



Golf Course Purchase - 1996

- 1997: Rezoned from condominiums to Park
- 1998: Combined all tax keys into one
- 2003: Conservation Easement
- 2014: Paid off loan
- Now self supporting



Our
Current
Property

Community Center Purchase – 1999



Wetland Purchase - 2001



Wetland Uses

Provides home for :

Aquatic Plant
Management Equipment

Water Safety Patrol Boat



Wetland Uses

Boardwalk provides
access to piers and ski
team show area



Fuel Farm Replacement - 2002



Then....

NOW....



Maintenance Building Replacement - 2006

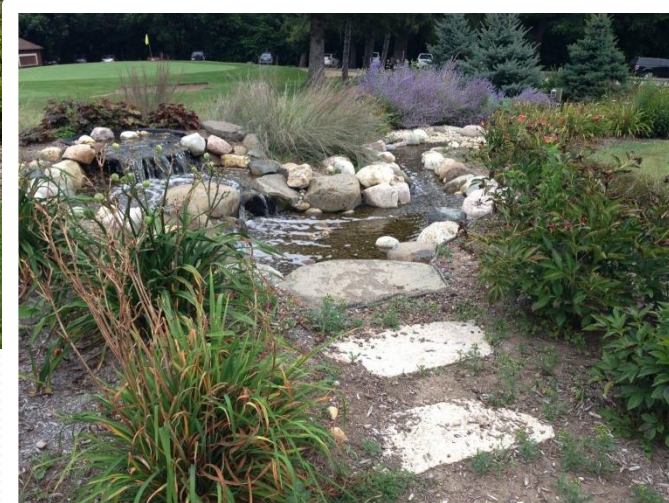


Then....



NOW....

Meyers Park Restoration - 2012



*Special Thanks to
the Meyers Family!*

Long Range Planning Update

University of Wisconsin - Milwaukee

- Community Design Solutions
 - School of Architecture & Urban Planning
 - Survey the Community
 - Developed an initial plan
 - Initial planning meeting August 2015

Highlights Since August 2015

- Hired Kehoe & Henry
- Identified project areas
 - Current assets
 - Traffic management
 - Property development
 - Non-golf recreation
- Assembled a team of professionals

Next Steps

- Winter 2016-2017: Review preliminary plan
- Summer 2017: Conduct public meetings
- Use public input to develop final plan
- Community decision

Environmental Projects

Audubon Cooperative Sanctuary Program

- Goals are to protect environment & reduce expenses
- Six certification categories
 - Environmental Planning – Certified 2014
 - Wildlife & Habitat Management – Certified July 2016
 - Chemical use reduction & safety – Certified August 2016
 - Water Conservation
 - Water Quality Management
 - Outreach & education

Goose Management

- Capture only non-migratory geese (those that migrate have already moved north)
- Geese cannot fly during a 3-4 week period
- Geese are captured & caged individually
- Geese end up in food pantries
- 2016: Captured 20
- Program will continue in 2017
- Thanks to Bruce Bauman & Doug Ward

Wetlands Management

- Introduction of native plants on shoreline
 - Stabilize land
 - Add natural beauty and support native plants & wildlife
- Control of invasive species
- Limited mowing to only provide needed access:
 - Aquatic Plant Management & Water Safety Patrol equipment
 - Ski team performances
 - LL Yacht Club fireworks display (only once annually)

Reducing Materials Entering Lake

- Collect leaves and remove sediment along Country Club Dr to reduce what ends up in the lake
- Installed decorative fencing to prevent dumping of leaves and lawn materials in areas where it washes into the lake
- Maintain lot purchased in Gladhurst subdivision where a detention pond was constructed to allow surface run-off to collect and gradually perk
- Maintain agreements with two local farmers where detention pond and grassy buffers reduce surface run-off

Septic Pumping Report



Want more information on your older system?

- Contact Lance at Septic Associates 262-495-7004
- Call any septic service
- Contact information for me is on the website:
lauderdalelakedistrict.com

Piers

- 22 permits issued for replacement or new piers
- All in conformance with Town Ordinance and State Law
- 7 different Pier Builders active on the Lakes
- Application and information on the website: lauderdalelakedistrict.com
- Thanks for the cooperation of the homeowners and pier builders
- Thanks to Andi White the Pier Inspector

Aquatic Plant Management Report (AKA “Weed Harvesting”)



APM (Aquatic Plant Management) Program

- Fight the takeover by invasive plants
- Aid navigation and swimming
- Reduce build-up of muck
- Maintain an environment for the 'good' plants and animals; endeavor to always leave 1 foot of plant material
- Starry Stonewort is latest invasive plant

2016 APM Plan

- DNR now requiring APMP updates every 5 years.
- Plant sampling performed in 2014. APMP update issued in December 2015.
- Five year harvesting permit issued by DNR.
- APMP defines mechanical harvesting areas; pier head to open water.
- APMP now includes removal of floaters where reachable by harvester.

2016 Plant Harvesting Status

- Plant growth seems more aggressive in Sterlingworth Bay.
- Our 25 year old equipment is being well maintained by the crew.
- Thanks to Mike, Joe and Pat.
- Steve Taylor is a new crew member.
- Thanks to Don West for continuing to take our plant material.
- If needed, contact # 262/742-4511
- The harvesting location schedule is on the web site.
- To aid harvesting, move buoys, rafts, floating toys, etc. behind pier head if possible.

Riparian Shore Yard Maintenance

- Pier head to shore is riparian owner maintained; removal of floaters, debris and fallen leaves substantially improves water clarity.
- Manual cleaning of plant material and muck performed by Sweeney's .
- New method being used is DASH (Diver Assisted Suction Harvesting) method performed by Eco Waterway.
- Plant material, including roots, is collected.
- DNR allows 3 cubic yards or 100 cubic feet of manual muck removal each year.
- Investigating portable small quantity dredging to improve water quality.

Clean Boats / Clean Water

- State sponsored program to eliminate cross contamination of invasive species and diseases from lake to lake.
- Connor Hamilton, our weed harvesting crew and myself are CBCW inspectors.
- Connor Hamilton is monitoring launches on Fridays and weekends.
- Coverage principally includes Sterlingworth and Green Lake launches.
- Up to 65% of the costs may be covered by State Grant money.

Outflow Dam Report



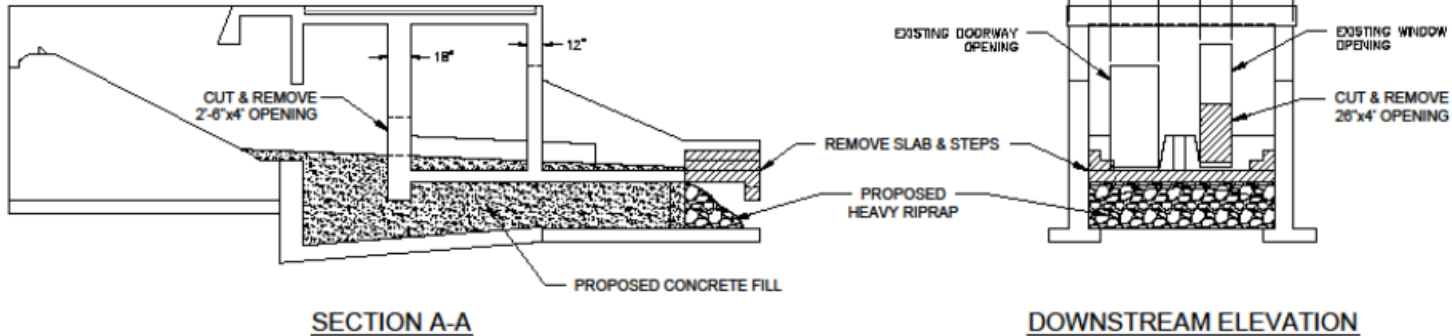
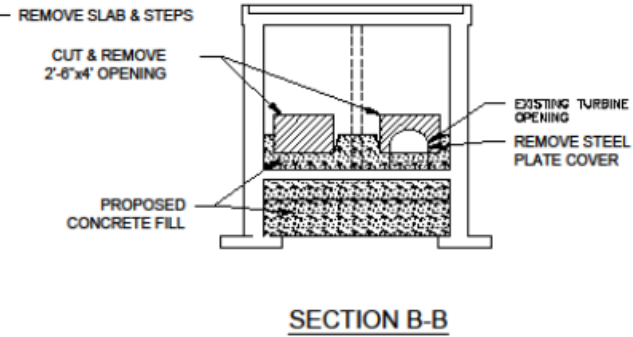
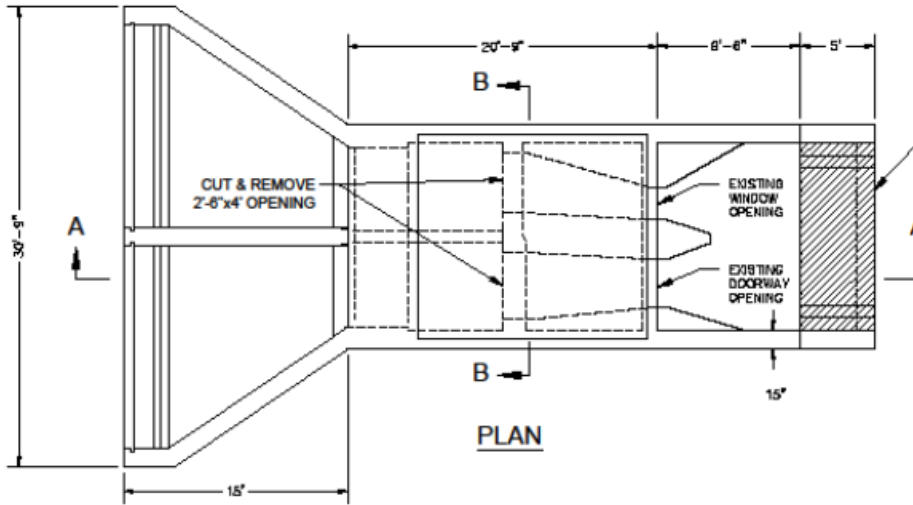
Report on the Dam

- Operating as expected
- Routine grounds maintenance provided to keep area clear of debris
- DNR-mandated engineering inspection due every 3 years

Dam...as it looks today



Dam ... Modification Plan



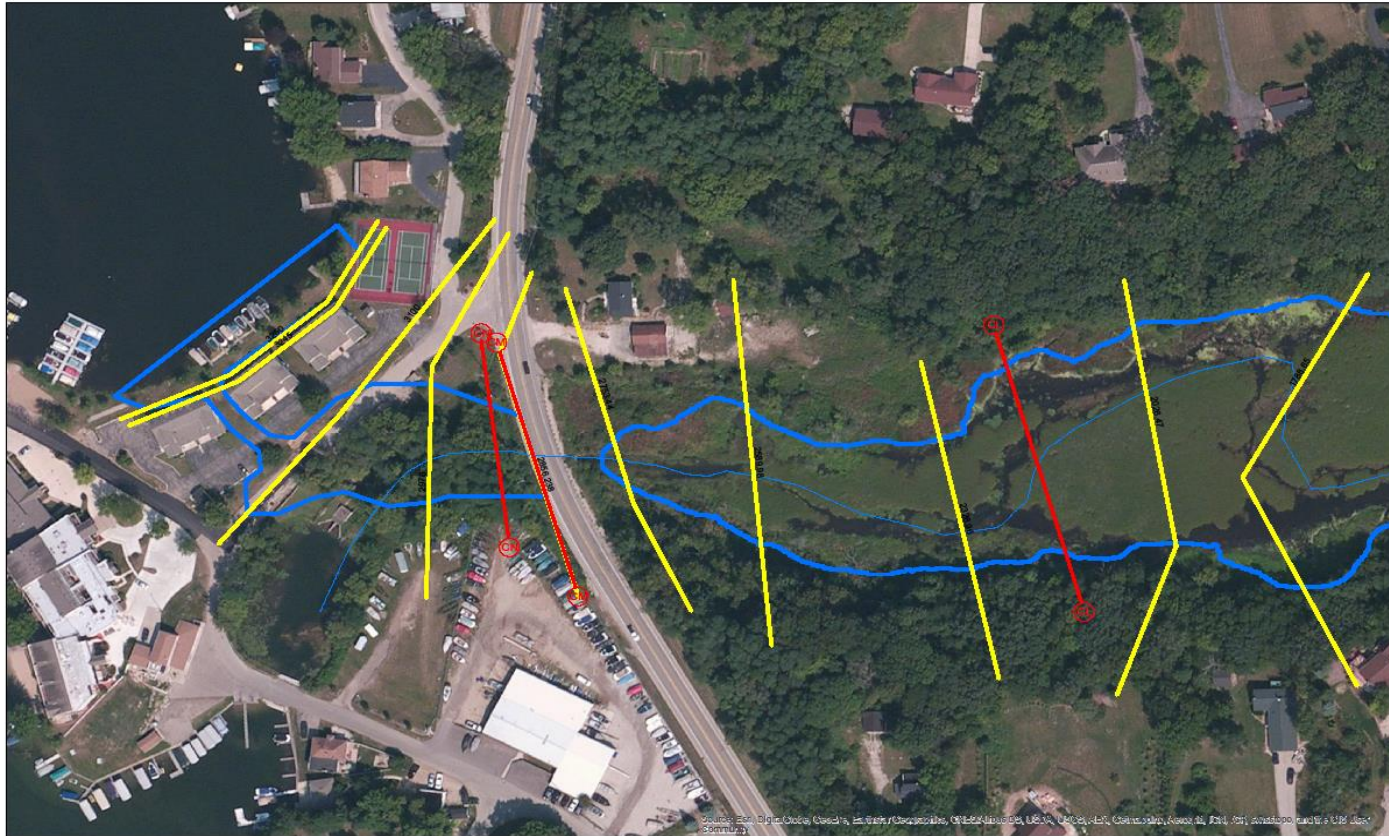
DESCRIPTION	
DATE	

R.A. Smith National
Regional Surveying
and Engineering
www.ra-smith.com

LAUDERDALE LAKES DAM
WALWORTH COUNTY
PROPOSED DAM MODIFICATIONS
PRELIMINARY CONCEPT

(C) COPYRIGHT 2015 R.A. Smith National, Inc.
DATE: 09/24/15
SCALE: 1/8" = 1'
JOB NO: 1103018
PROJECT MANAGER: B.C. JAMESON, P.E.
DESIGNED BY: BCB
CHECKED BY: BCB
SHEET NUMBER

Hydraulic Shadow Map Dam Failure Analysis



Treasurer's Report

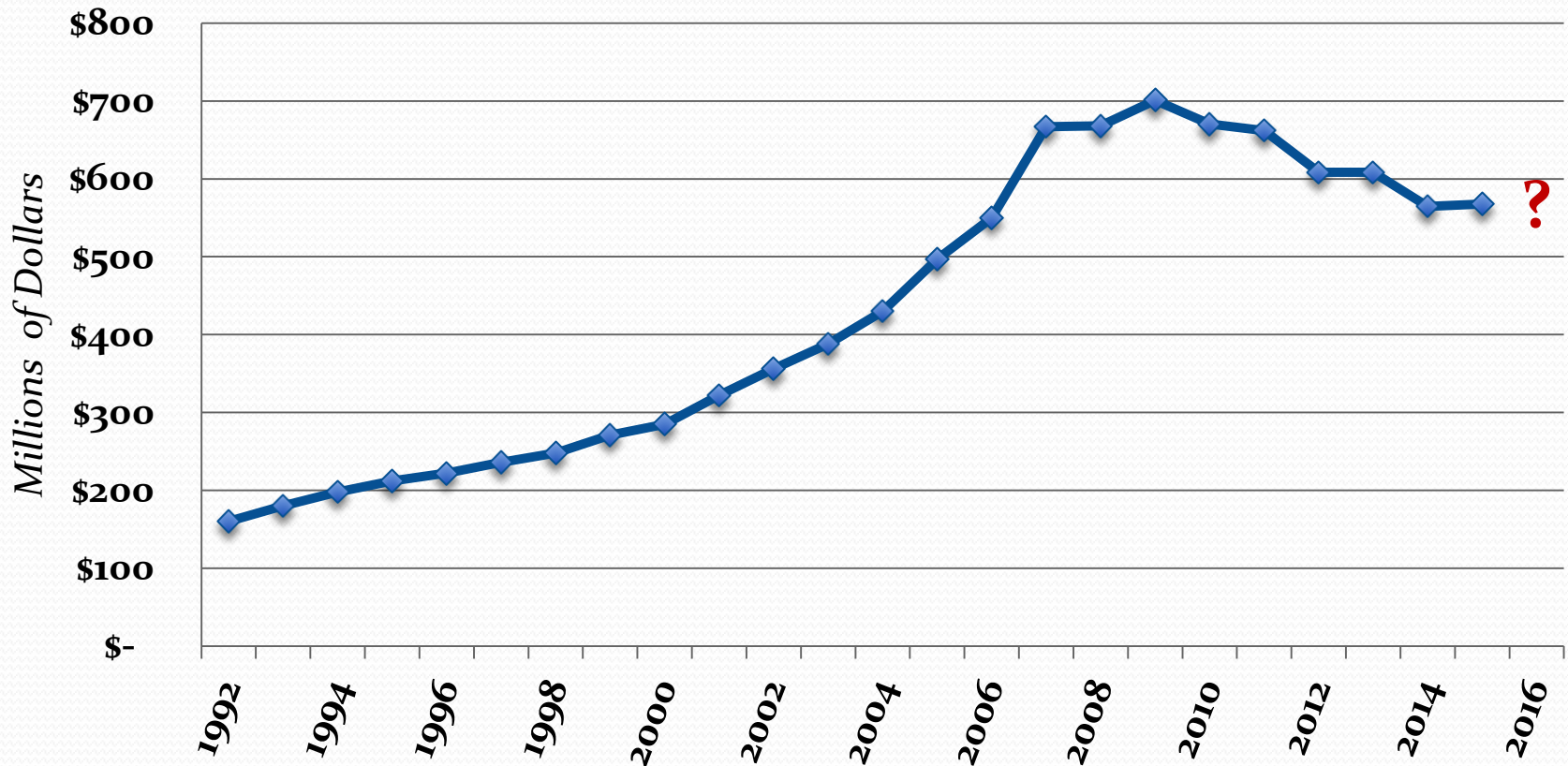
PROPERTY VALUATIONS

Year	\$ in millions	% Change	Year	\$ in millions	% Change
1992	\$160		2004	\$430	10.82%
1993	\$180	12.50%	2005	\$497	15.58%
1994	\$198	10.00%	2006	\$550	10.66%
1995	\$212	7.07%	2007	\$667	21.27%
1996	\$222	4.72%	2008	\$668	0.15%
1997	\$236	6.31%	2009	\$701.0	4.94%
1998	\$248	5.08%	2010	\$670.4	-4.37%
1999	\$271	9.27%	2011	\$662.1	-1.24%
2000	\$285	5.17%	2012	\$608.4	-8.11%
2001	\$322	12.98%	2013	\$608.3	-0.02%
2002	\$356	10.56%	2014	\$564.7	-7.17%
2003	\$388	8.99%	2015	\$567.5	0.50%

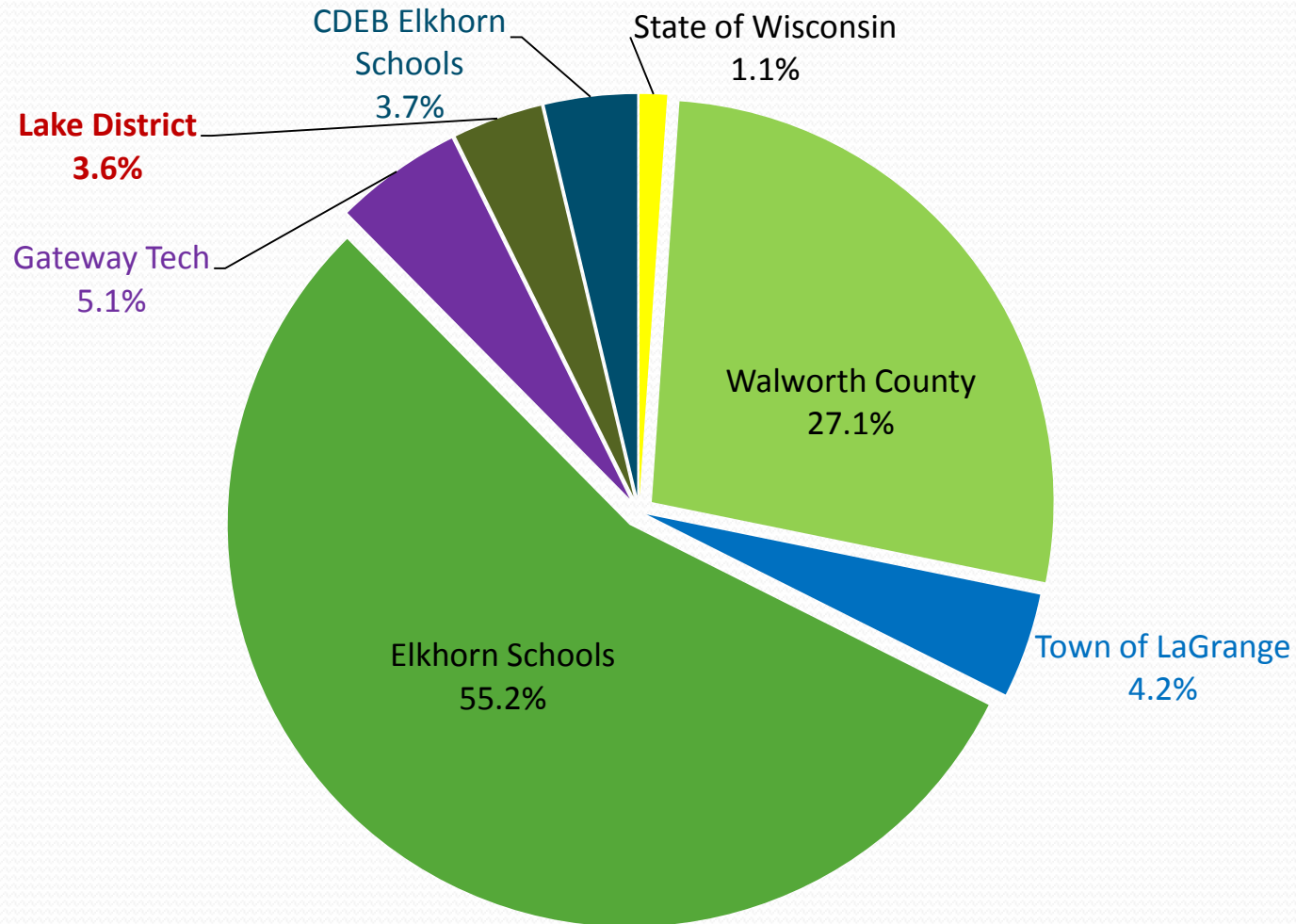
PROPERTY VALUATIONS

...shown another way

Total Valuation of Lake District Properties



WHERE DID YOUR TAXES GO?



Town of LaGrange Residents

WHAT DOES THAT MEAN IN \$\$?

If your tax bill was \$10,000, here is how it would be distributed...

TAXING JURISDICTION	2015 Net Tax
Elkhorn Area Schools	\$ 5,525.53
Walworth County	2,710.50
Gateway Technical	509.40
Town of LaGrange	416.76
CDEB Elkhorn Schools	367.59
LL Lake Management District	361.47
State of Wisconsin	108.75
TOTAL	\$10,000.00

Town of LaGrange Residents

Treasurer's Report *(balances @7/31/16)*

Checking	Money Market/CD	Cash on Hand	Total
----------	--------------------	--------------	-------

Operating Accounts:

Lake District	\$ 21,905.76	\$ 195,787.34		\$ 217,693.10
Water Safety Patrol	18,583.63			18,583.63
Aquatic Plant Management	13,100.72			13,100.72
Golf Course	18,229.20	21,011.18	1,140.00	40,380.38
<i>Subtotal Operating</i>	<i>\$ 71,819.31</i>	<i>\$ 216,798.52</i>	<i>\$ 1,140.00</i>	<i>\$ 289,757.83</i>

Reserve Accounts:

Operating Reserve	\$ 22,243.95	\$ 102,269.01		\$ 124,512.96
Equipment Reserves:				
Water Safety Patrol		5,135.33		5,135.33
Aquatic Plant Management		39,194.84		39,194.84
Capital Project Reserve	7,826.41	120,104.85		127,931.26
<i>Subtotal Reserves</i>	<i>\$ 30,070.36</i>	<i>\$ 266,704.03</i>	<i>\$ -</i>	<i>\$ 296,774.39</i>

TOTAL \$ 101,889.67 \$ 483,502.55 \$ 1,140.00 \$ 586,532.22

OUTSTANDING LOAN BALANCE

\$ 0.00

2015 AUDIT REPORT

- Audit performed by local firm Chamberlain & Henningfield, Certified Public Accountants, LLP
- Independent auditor's report: received an unqualified (or "clean") opinion for 2015 financial statements
- Financial statements and auditor's report will be available on website shortly

Amendments to Budget

2017 Budget & Tax Levy

2017 Proposed Budget & Tax Levy

	2016 Approved Budget	2017 Proposed Budget	Inc/(Dec) from 2016	
			\$	%
Aquatic Plant Management	\$ 46,000	\$ 46,000	\$ -	0.0%
Water Safety Patrol	59,500	25,800	(33,700)	-56.6%
Dam Maintenance	2,500	4,000	1,500	60.0%
Dam Modification	40,000	-	(40,000)	-100.0%
Environmental Projects	21,000	23,500	2,500	11.9%
Communications	3,500	4,500	1,000	28.6%
Insurance	14,000	14,000	-	0.0%
Legal	15,000	13,000	(2,000)	-13.3%
Community Center	4,400	5,400	1,000	22.7%
Certified Audit	3,675	4,000	325	8.8%
Lake District Maintenance Bldg	6,800	7,100	300	4.4%
General Lake District Operation <i>(incl Pier Insp & Septic Admin)</i>	13,730	16,900	3,170	23.1%
Addition to Lake District Reserve	5,000	5,000	-	0.0%
Golf Course Loan	-	-	-	
Capital Reserve	85,000	85,000	-	0.0%
TOTAL BUDGET	\$ 320,105	\$ 254,200	\$ (65,905)	-20.6%
Available Cash Balance		(40,000)	(40,000)	
TOTAL TAX LEVY	\$ 320,105	\$ 214,200	\$ (105,905)	-33.1%

Other Business for Discussion

Check out the website:

lauderdalelakedistrict.com

Attend Board meetings

Watch for Updates on Capital Project

See you next year – Sept 2, 2017 !